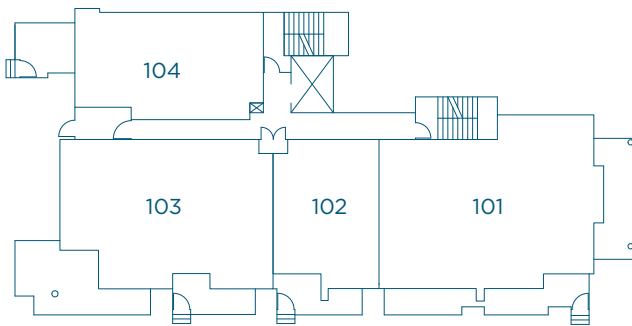
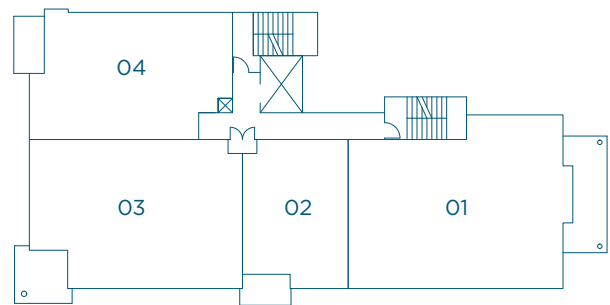




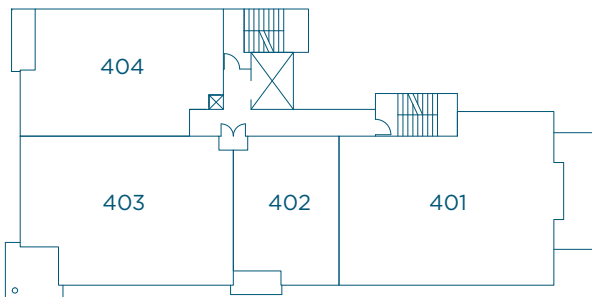
# SITE PLAN



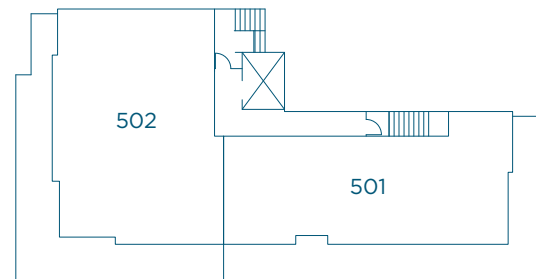
**LEVEL 1**



**LEVEL 2-3**



**LEVEL 4**



**PENTHOUSE LEVEL**



Developer reserves the right to make modifications to the floorplans, areas, unit numbers and/or specifications without notice. Actual floorplans may have minor variations from the illustrations above. Measurements are based on architectural areas and not taken from the strata plan. This is not an offering for purchase. Any such offering can only be made with a Disclosure Statement. E&OE

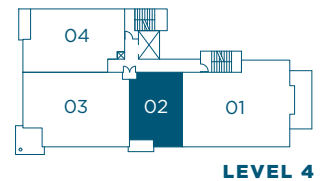
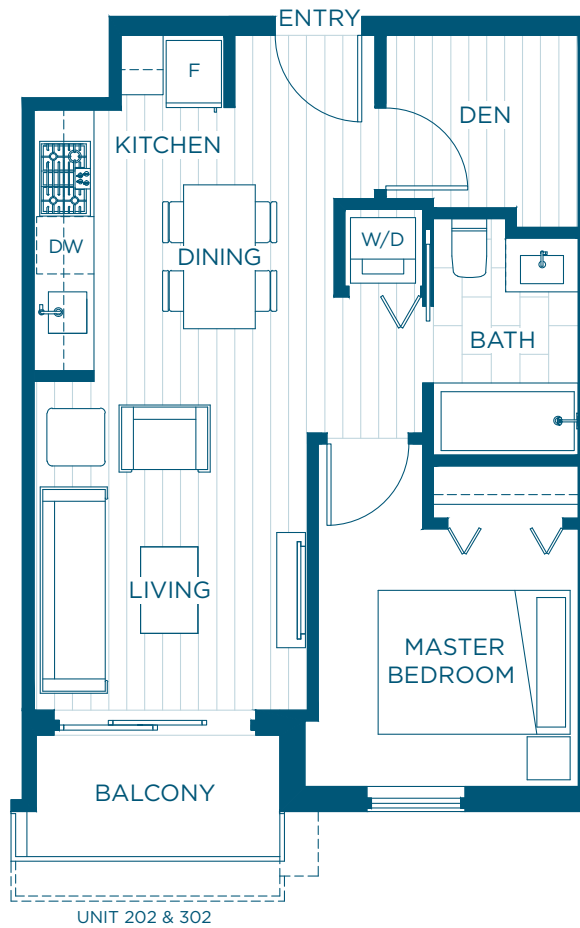
# PLAN A

1 BED + DEN / 1 BATH

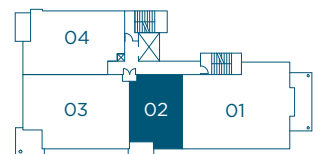
INTERIOR: 505 SQ FT

EXTERIOR: 35 - 50 SQ FT

TOTAL: 540 - 555 SQ FT



LEVEL 4



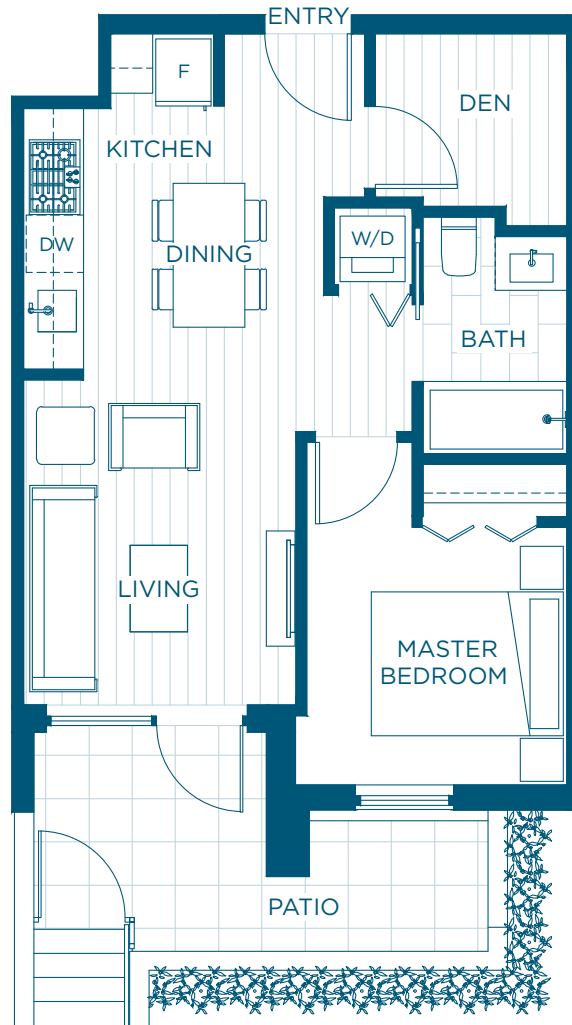
LEVEL 2-3

Developer reserves the right to make modifications to the floorplans, areas, unit numbers and/or specifications without notice. Actual floorplans may have minor variations from the illustrations above. Measurements are based on architectural areas and not taken from the strata plan. This is not an offering for purchase. Any such offering can only be made with a Disclosure Statement. E&OE

# PLAN A1

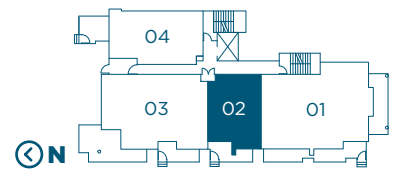
1 BED + DEN / 1 BATH

INTERIOR: 505 SQ FT  
EXTERIOR: 100 SQ FT  
TOTAL: 605 SQ FT



Developer reserves the right to make modifications to the floorplans, areas, unit numbers and/or specifications without notice. Actual floorplans may have minor variations from the illustrations above. Measurements are based on architectural areas and not taken from the strata plan. This is not an offering for purchase. Any such offering can only be made with a Disclosure Statement. E&OE

604.559.0685 • [INFO@LIVEATCREST.CA](mailto:INFO@LIVEATCREST.CA) • [LIVEATCREST.CA](http://LIVEATCREST.CA)



LEVEL 1

# PLAN B

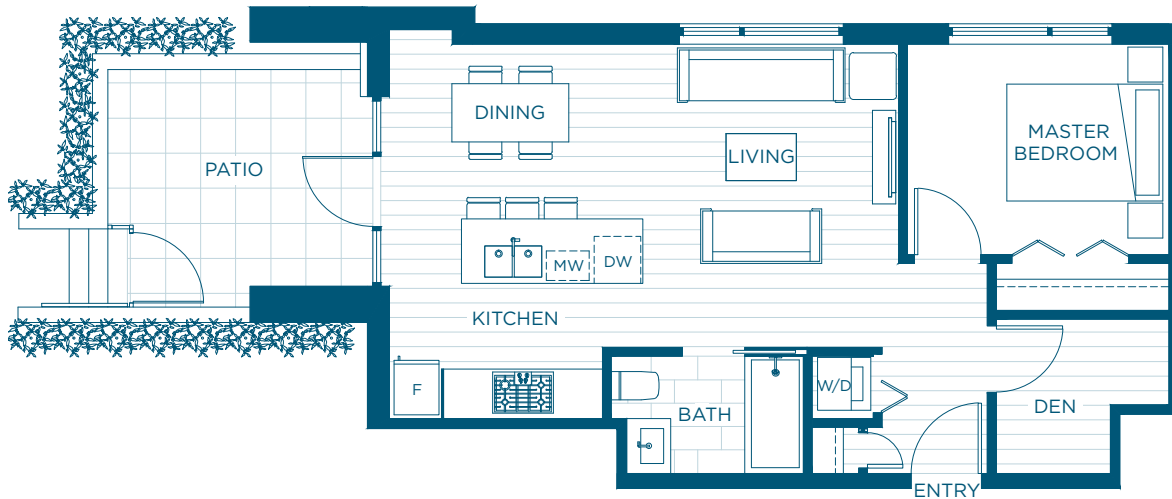


1 BED + DEN / 1 BATH

INTERIOR: 640 SQ FT

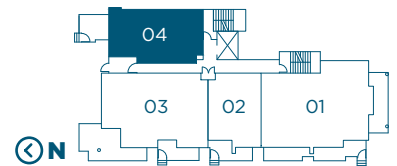
EXTERIOR: 115 SQ FT

TOTAL: 755 SQ FT



Developer reserves the right to make modifications to the floorplans, areas, unit numbers and/or specifications without notice. Actual floorplans may have minor variations from the illustrations above. Measurements are based on architectural areas and not taken from the strata plan. This is not an offering for purchase. Any such offering can only be made with a Disclosure Statement. E&OE

604.559.0685 • [INFO@LIVEATCREST.CA](mailto:INFO@LIVEATCREST.CA) • [LIVEATCREST.CA](http://LIVEATCREST.CA)

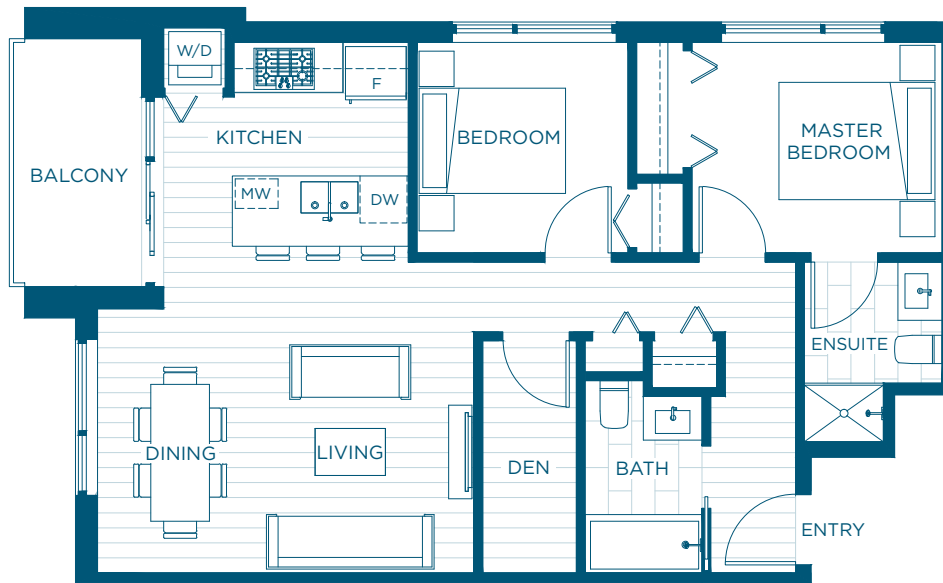


LEVEL 1

# PLAN C

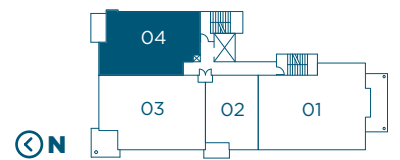
2 BED + DEN / 2 BATH

INTERIOR: 825 SQ FT  
EXTERIOR: 60 SQ FT  
TOTAL: 885 SQ FT



Developer reserves the right to make modifications to the floorplans, areas, unit numbers and/or specifications without notice. Actual floorplans may have minor variations from the illustrations above. Measurements are based on architectural areas and not taken from the strata plan. This is not an offering for purchase. Any such offering can only be made with a Disclosure Statement. E&OE

604.559.0685 • [INFO@LIVEATCREST.CA](mailto:INFO@LIVEATCREST.CA) • [LIVEATCREST.CA](http://LIVEATCREST.CA)

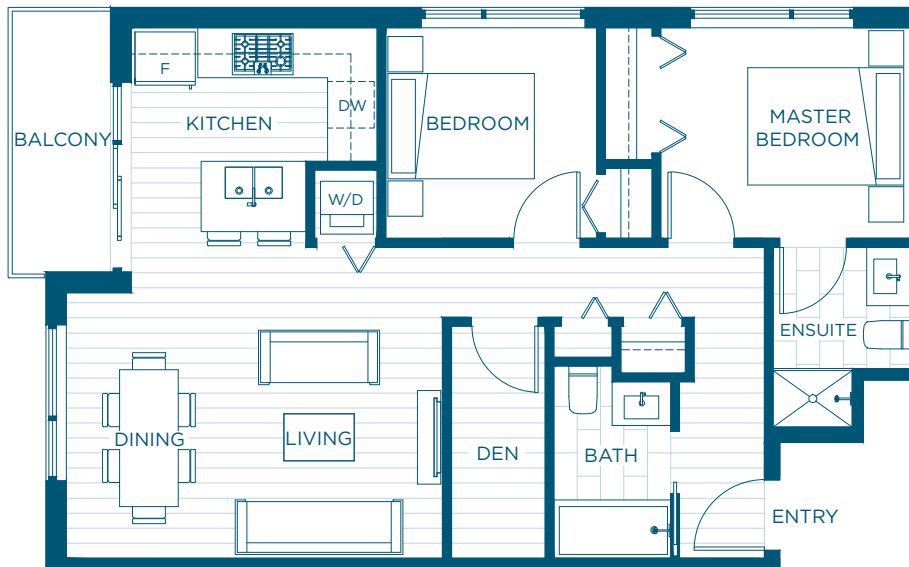


LEVEL 2-3

# PLAN C1

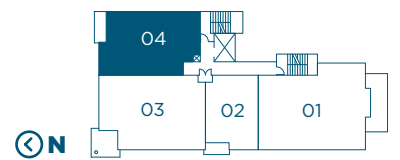
2 BED + DEN / 2 BATH

INTERIOR: 820 SQ FT  
EXTERIOR: 50 SQ FT  
TOTAL: 870 SQ FT



Developer reserves the right to make modifications to the floorplans, areas, unit numbers and/or specifications without notice. Actual floorplans may have minor variations from the illustrations above. Measurements are based on architectural areas and not taken from the strata plan. This is not an offering for purchase. Any such offering can only be made with a Disclosure Statement. E&OE

604.559.0685 • [INFO@LIVEATCREST.CA](mailto:INFO@LIVEATCREST.CA) • [LIVEATCREST.CA](http://LIVEATCREST.CA)



LEVEL 4

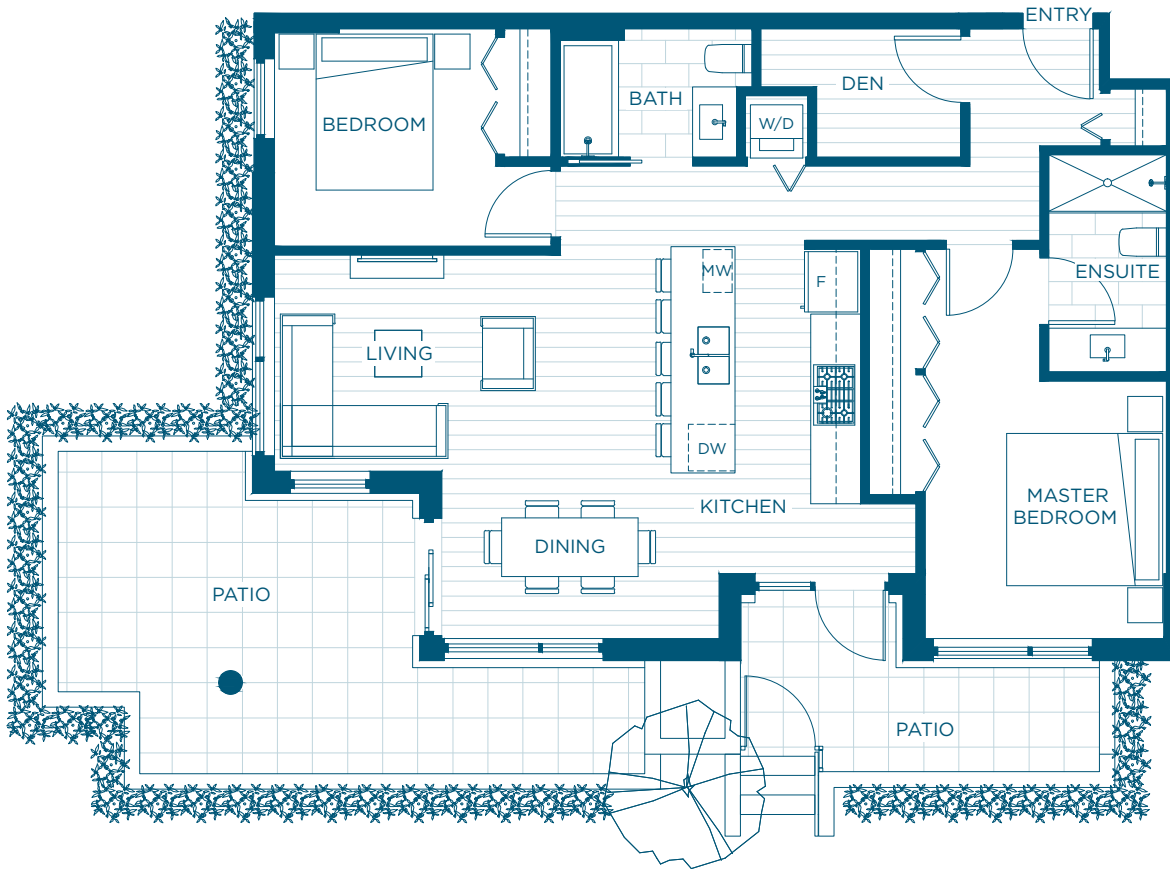
# PLAN D

2 BED + DEN / 2 BATH

INTERIOR: 1000 SQ FT

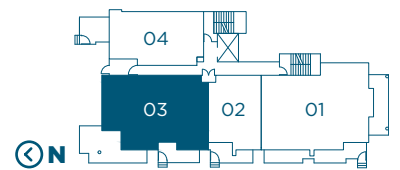
EXTERIOR: 330 SQ FT

TOTAL: 1330 SQ FT



Developer reserves the right to make modifications to the floorplans, areas, unit numbers and/or specifications without notice. Actual floorplans may have minor variations from the illustrations above. Measurements are based on architectural areas and not taken from the strata plan. This is not an offering for purchase. Any such offering can only be made with a Disclosure Statement. E&OE

604.559.0685 • [INFO@LIVEATCREST.CA](mailto:INFO@LIVEATCREST.CA) • [LIVEATCREST.CA](http://LIVEATCREST.CA)



LEVEL 1

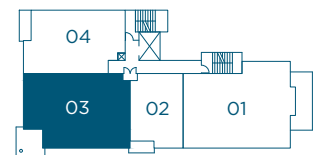
# PLAN E

2 BED + DEN / 2 BATH

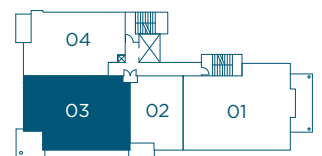
INTERIOR: 1020 SQ FT

EXTERIOR: 100 SQ FT

TOTAL: 1120 SQ FT



LEVEL 4



LEVEL 2-3

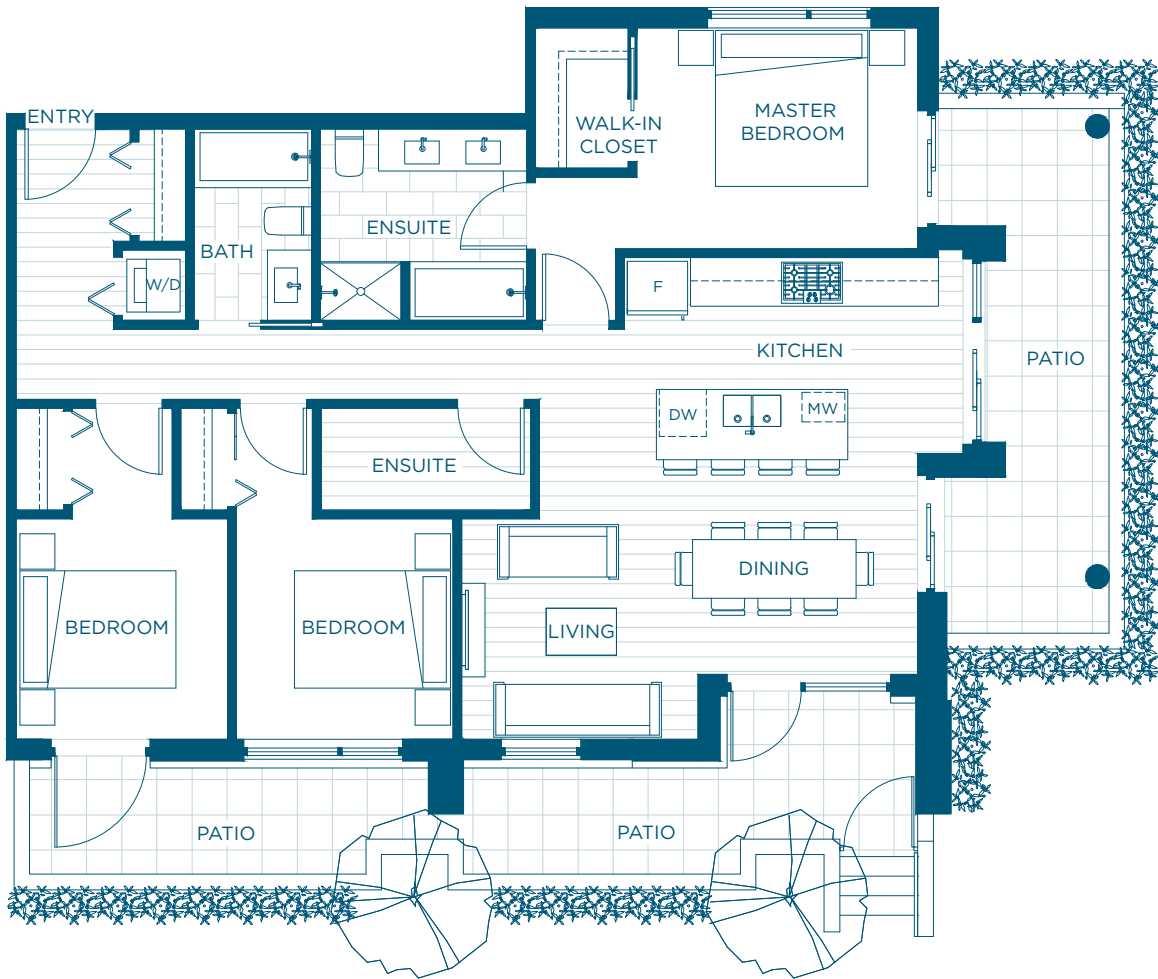
Developer reserves the right to make modifications to the floorplans, areas, unit numbers and/or specifications without notice. Actual floorplans may have minor variations from the illustrations above. Measurements are based on architectural areas and not taken from the strata plan. This is not an offering for purchase. Any such offering can only be made with a Disclosure Statement. E&OE



# PLAN F

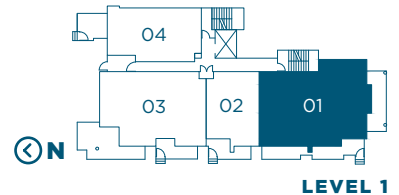
3 BED + DEN / 2 BATH

INTERIOR: 1165 SQ FT  
EXTERIOR: 340 SQ FT  
TOTAL: 1505 SQ FT



Developer reserves the right to make modifications to the floorplans, areas, unit numbers and/or specifications without notice. Actual floorplans may have minor variations from the illustrations above. Measurements are based on architectural areas and not taken from the strata plan. This is not an offering for purchase. Any such offering can only be made with a Disclosure Statement. E&OE

604.559.0685 • INFO@LIVEATCREST.CA • LIVEATCREST.CA



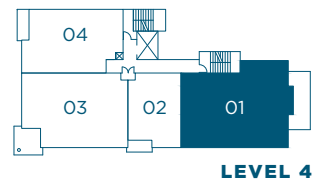
# PLAN G

3 BED + DEN / 2 BATH

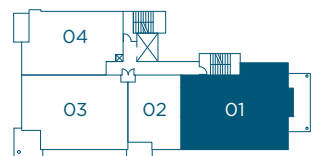
INTERIOR: 1190 SQ FT

EXTERIOR: 145 SQ FT

TOTAL: 1335 SQ FT



LEVEL 4



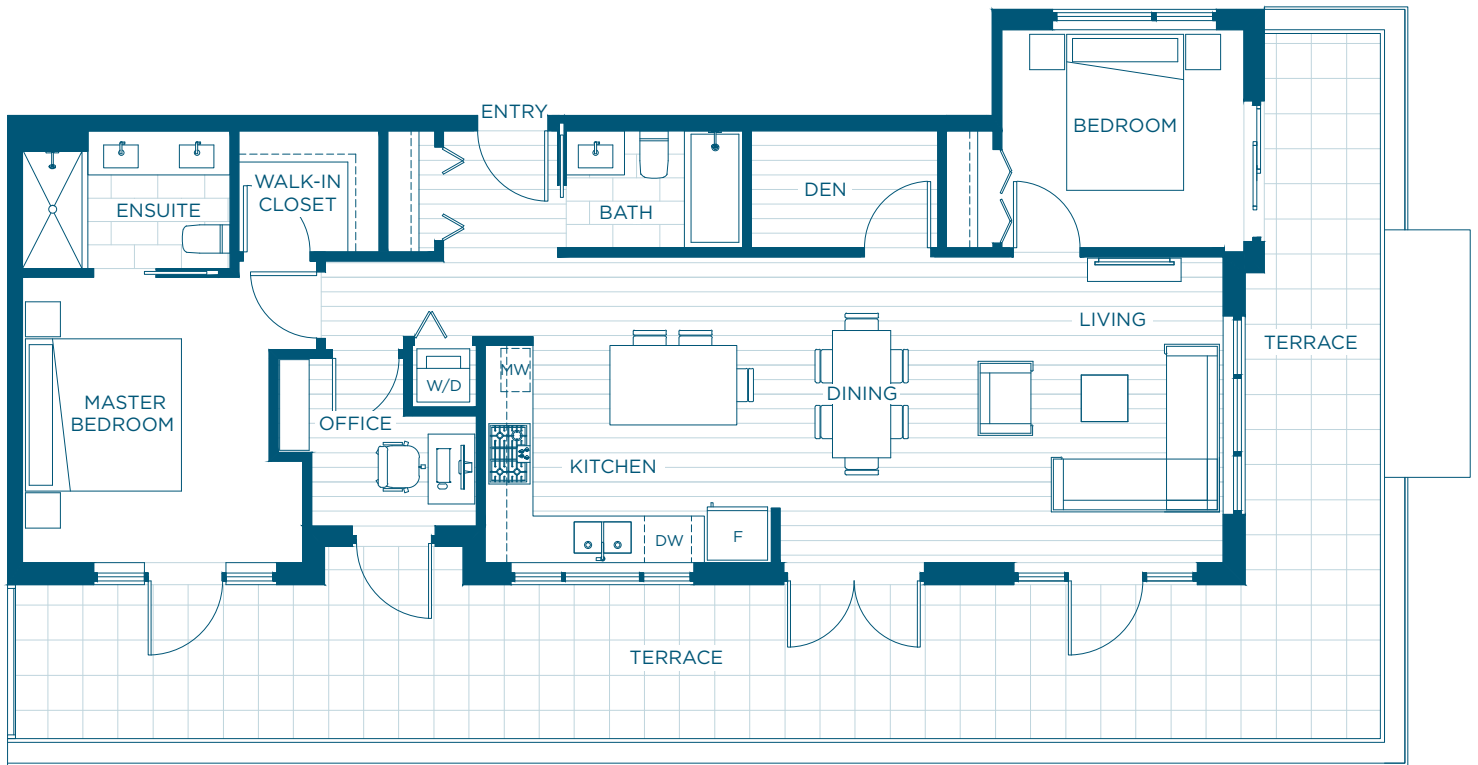
LEVEL 2-3

Developer reserves the right to make modifications to the floorplans, areas, unit numbers and/or specifications without notice. Actual floorplans may have minor variations from the illustrations above. Measurements are based on architectural areas and not taken from the strata plan. This is not an offering for purchase. Any such offering can only be made with a Disclosure Statement. E&OE

# PLAN PH1

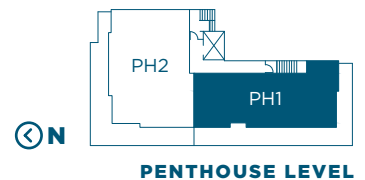
2 BED + DEN + OFFICE / 2 BATH

INTERIOR: 1085 SQ FT  
EXTERIOR: 525 SQ FT  
TOTAL: 1610 SQ FT



Developer reserves the right to make modifications to the floorplans, areas, unit numbers and/or specifications without notice. Actual floorplans may have minor variations from the illustrations above. Measurements are based on architectural areas and not taken from the strata plan. This is not an offering for purchase. Any such offering can only be made with a Disclosure Statement. E&OE

604.559.0685 • [INFO@LIVEATCREST.CA](mailto:INFO@LIVEATCREST.CA) • [LIVEATCREST.CA](http://LIVEATCREST.CA)



# PLAN PH2

3 BED + DEN / 2.5 BATH

INTERIOR: 1290 SQ FT

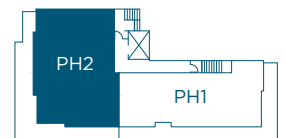
EXTERIOR: 540 SQ FT

TOTAL: 1830 SQ FT



Developer reserves the right to make modifications to the floorplans, areas, unit numbers and/or specifications without notice. Actual floorplans may have minor variations from the illustrations above. Measurements are based on architectural areas and not taken from the strata plan. This is not an offering for purchase. Any such offering can only be made with a Disclosure Statement. E&OE

604.559.0685 • [INFO@LIVEATCREST.CA](mailto:INFO@LIVEATCREST.CA) • [LIVEATCREST.CA](http://LIVEATCREST.CA)



PENTHOUSE LEVEL



# FEATURES

## BOUTIQUE BUILDING

- Beautifully designed 5 storey residential only building by award-winning Ankenman Marchand Architects
- Centrally located just steps to Queen Elizabeth Park, Main Street and Hillcrest Community Centre
- Located on a quiet residential tree-lined street
- Get to know your neighbours with a maximum of 4 homes per floor
- Most are corner homes, offering plenty of natural light and cross ventilation
- Spacious patios, balconies or terraces extend your living space
- A combination of high quality exterior metal panelling and corrugated metal siding ensure durability
- Energy efficient exterior wall system provides 50% more R-value
- An abundance of windows in each home to maximize views and sunlight
- Double-pane window system for a quiet living experience
- Heat Recovery Ventilator for fresh air throughout the home
- Overheight 9' ceiling in main living area of homes (10' ceilings in penthouses)

## ENVIABLE INTERIORS

- Interior design by award-winning Occupy Design
- Customize your home with one of two colour palettes - Wood or White
- Wide plank, European inspired engineered hardwood flooring in the living, dining, kitchen and den areas
- High quality wool blend carpeting in bedrooms
- Sleek roller-style shades on all windows
- Distinctive modern flat-stock baseboards and door trims
- Energy efficient front-loading Whirlpool washer and dryer with adaptive wash technology
- Solid-core suite entry doors, polished chrome lever and privacy lock for peace-of-mind

- Modern panel style doors for bathrooms, bedrooms and closets
- Integrated LED down lighting ensuring just the right ambiance in your home
- Reliable central gas-fired boiler for domestic hot water

## STATE-OF-THE-ART KITCHENS

- Beautiful and durable solid quartz countertop that extends to the backsplash
- Premium stainless steel appliance package including:
  - Fisher & Paykel fridge / freezer (Bosch in 1 bedroom homes)
  - Gas 4-burner cook-top by Bosch
  - Thermal wall oven by Bosch
  - Fully-integrated dishwasher by Bosch
  - Sleek slim slide-out hood fan by Bosch in all 2 and 3 bedroom homes (with the exception Unit #404)
  - Space efficient over the range Panasonic microwave / hood fan in all 1 bedroom homes
  - Under the counter microwave by Panasonic in all 2 and 3 bedroom homes (with the exception Unit #404)
- Undermount stainless steel double bowl sink
- Dual-spray pull down chrome faucet by Grohe for sleek look and easy clean up
- Modern flat panel cabinet with soft close hardware for superior functionality
- Thoughtful under-cabinet lighting for well-lit kitchen prep

## SPA-LIKE BATHROOMS

- Undermount rectangle sink creates a sleek modern look for all bathrooms
- Distinctive large format porcelain tile flooring
- Relaxing soaker tub in main bathroom
- Ensuites with spacious walk-in shower or soaker tub
- Modern white tiles for tub/shower surrounds in main bathroom

- Beautiful marble mosaic tiles for shower surround in ensuites
- Single-lever Grohe fixtures throughout
- Elegant chrome accessories
- High efficiency dual flush toilet by Duravit
- Mirror vanity in ensuite
- Modern flat panel cabinets with soft close hardware

## EXEMPLARY EXTRAS

- Gated and secure underground parkade
- Security camera system in parkade
- Secure underground parking stall with each home
- Enterphone lobby with a secure FOB access control system
- FOB floor access-controlled elevator
- Hardwired smoke detectors in all homes and common areas
- Fully sprinklered, fire-protected building with annunciator panel and stand pipes
- Comprehensive 2/5/10 Travellers Home Warranty
  - 2 year materials and workmanship
  - 5 year building envelope protection
  - 10 year structural protection

## LEED GOLD CERTIFIED

- The Crest will be built in a sustainable manner to be extra energy and water efficient, increasing the comfort and durability of your home while reducing operating costs

## AMENITIES

- Common area courtyard with covered BBQ and eating area for socializing
- Convenient recycle and garbage disposal room
- Easily accessible and secure bike storage room

Developer reserves the right to make modifications to the floorplans, areas, unit numbers and/or specifications without notice. Actual floorplans may have minor variations from the illustrations above. Measurements are based on architectural areas and not taken from the strata plan. This is not an offering for purchase. Any such offering can only be made with a Disclosure Statement. E&OE