

LEVEL 2
Alaska St.

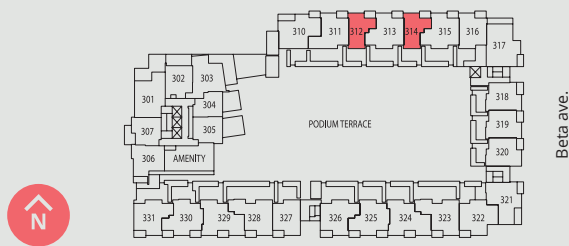
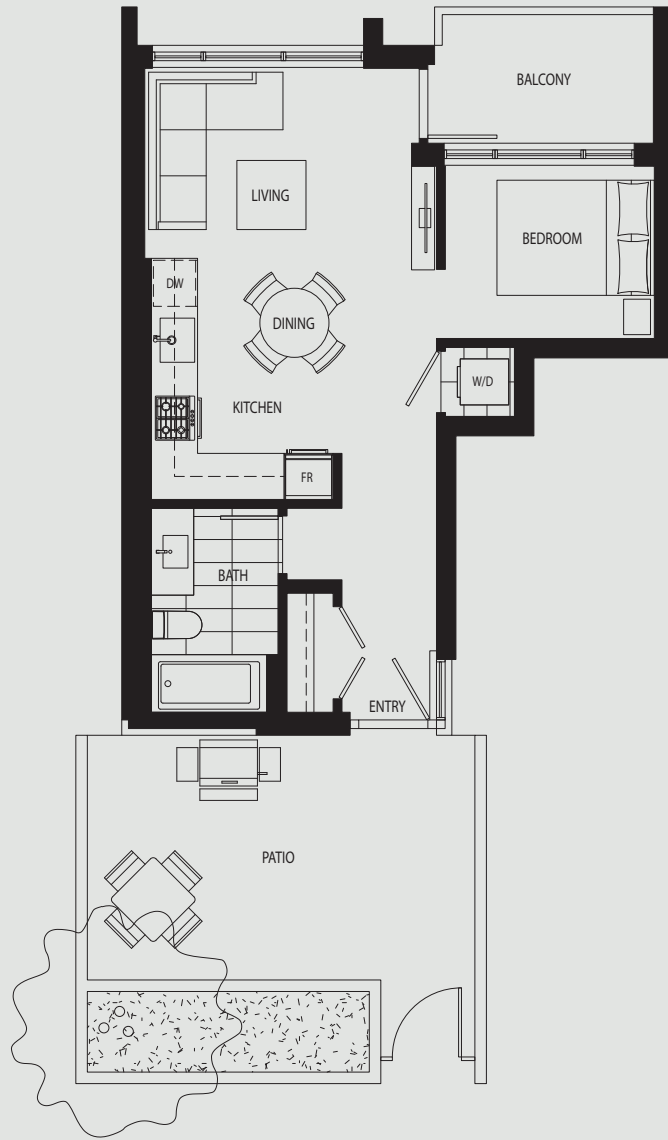
Plan A1

Suite

Interior: 478 s.f.
 Exterior: 0 s.f.
 Total: 478 s.f.

The developer reserves the right to modify or make substitutes to the building design, specifications and floorplans should they be necessary. Renderings, views, and layouts are for illustration purposes only. Sales powered by MLA Canada Realty, E.&O.E.





LEVEL 3

Alaska St.

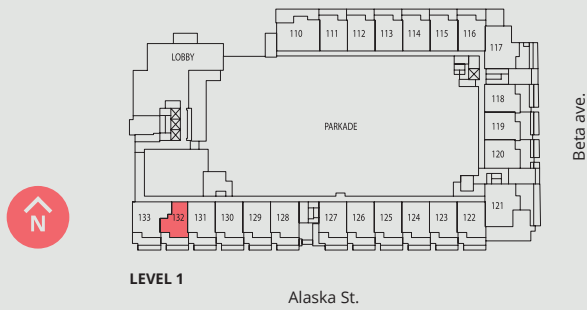
Plan A2

Suite

Interior: 485 s.f.
 Exterior: 264 s.f.
 Total: 749 s.f.

The developer reserves the right to modify or make substitutes to the building design, specifications and floorplans should they be necessary. Renderings, views, and layouts are for illustration purposes only. Sales powered by MLA Canada Realty, E.&O.E.





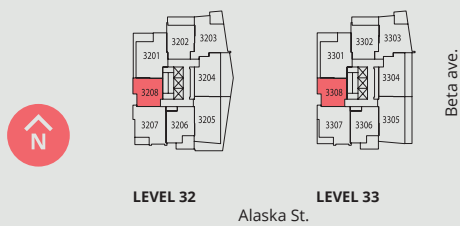
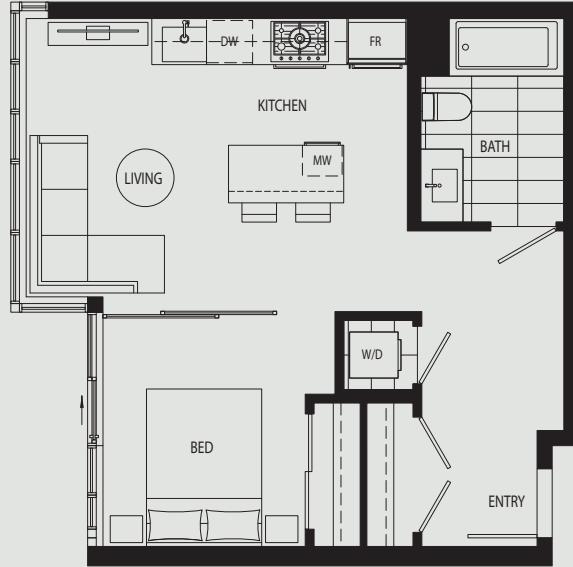
Plan A3

Suite

Interior: 535 s.f.
 Exterior: 172 s.f.
 Total: 707 s.f.

The developer reserves the right to modify or make substitutes to the building design, specifications and floorplans should they be necessary. Renderings, views, and layouts are for illustration purposes only. Sales powered by MLA Canada Realty, E.&O.E.





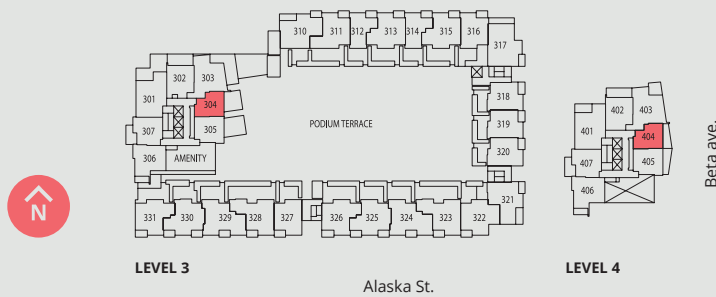
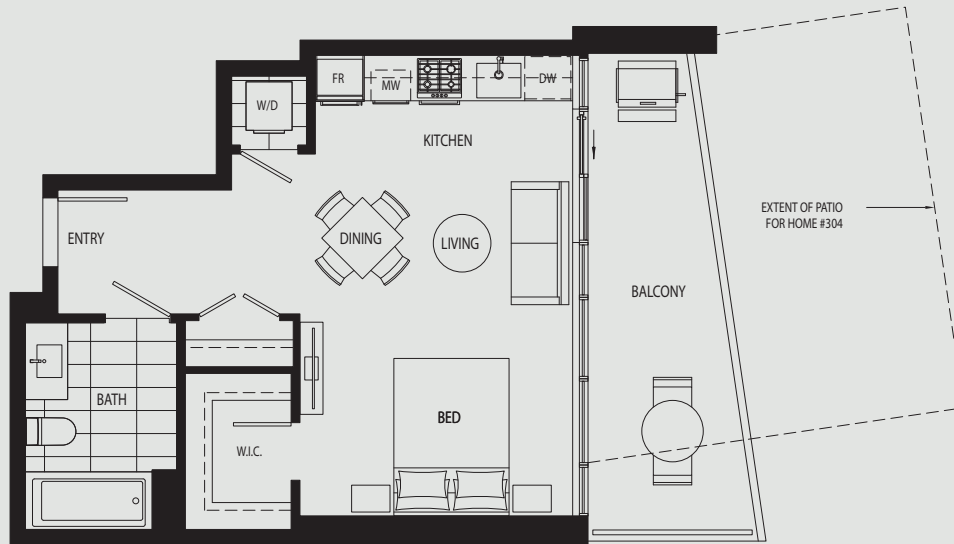
Plan A4

Suite (Adaptable)

Interior: 560 s.f.
 Exterior: 0 s.f.
 Total: 560 s.f.

The developer reserves the right to modify or make substitutes to the building design, specifications and floorplans should they be necessary. Renderings, views, and layouts are for illustration purposes only. Sales powered by MLA Canada Realty. E.&O.E.





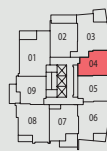
Plan A5

Suite (Adaptable)

Interior: 478 s.f.
 Exterior: 127-244 s.f.
 Total: 605-722 s.f.

The developer reserves the right to modify or make substitutes to the building design, specifications and floorplans should they be necessary. Renderings, views, and layouts are for illustration purposes only. Sales powered by MLA Canada Realty, E.&O.E.





Beta ave.

LEVELS 5-17
Alaska St.

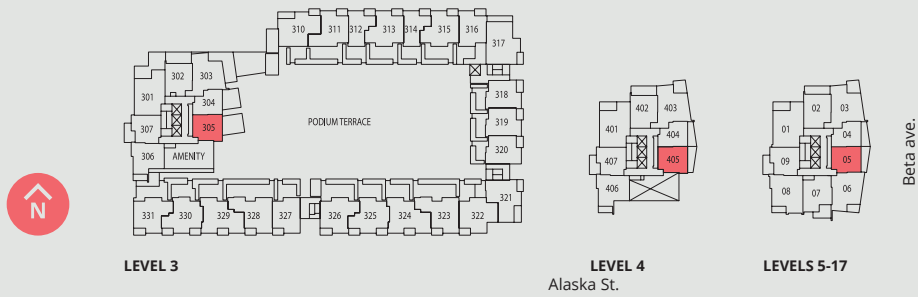
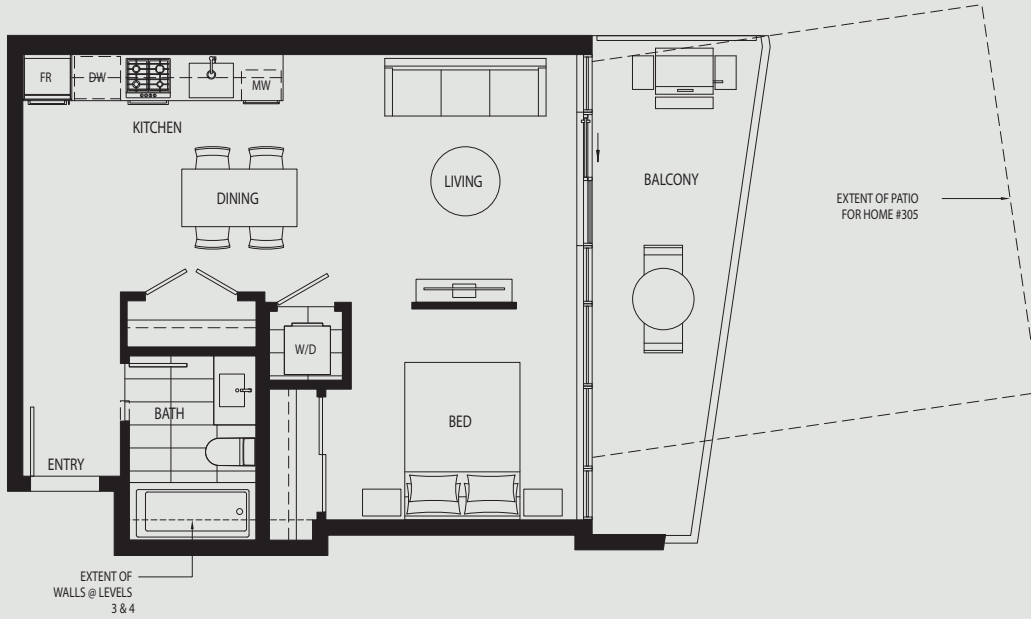
Plan A6

Suite (Adaptable)

Interior: 478 s.f.
 Exterior: 127-129 s.f.
 Total: 605-607 s.f.

The developer reserves the right to modify or make substitutes to the building design, specifications and floorplans should they be necessary. Renderings, views, and layouts are for illustration purposes only. Sales powered by MLA Canada Realty. E.&O.E.





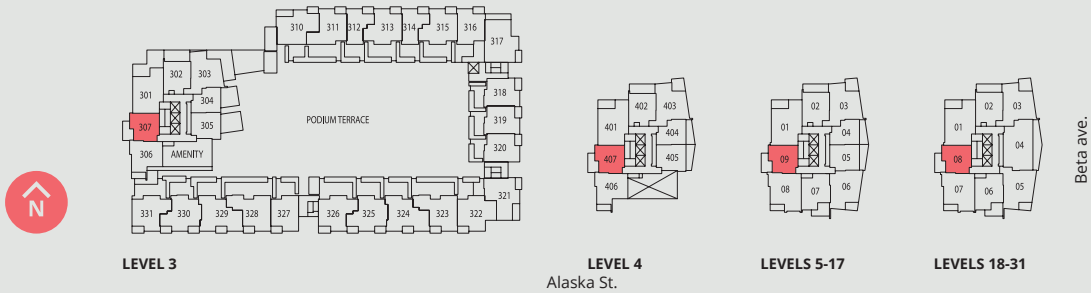
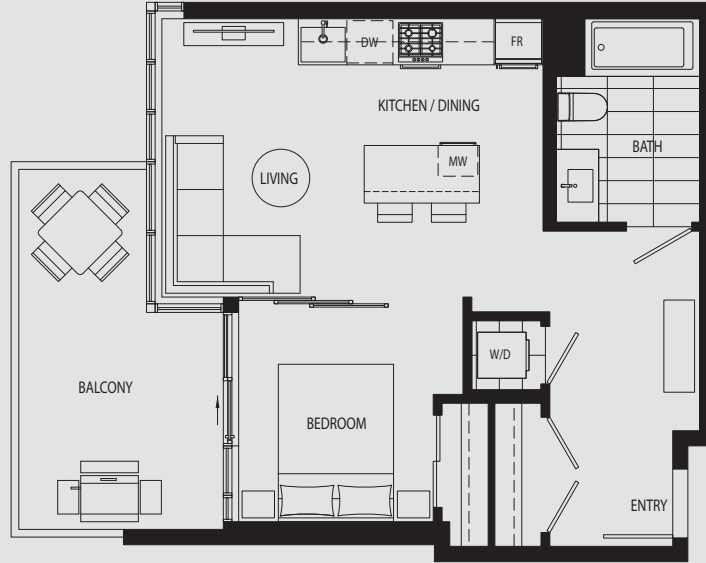
Plan A7

Suite

Interior: 550-563 s.f.
 Exterior: 134-286 s.f.
 Total: 684-849 s.f.

The developer reserves the right to modify or make substitutes to the building design, specifications and floorplans should they be necessary. Renderings, views, and layouts are for illustration purposes only. Sales powered by MLA Canada Realty, E.&O.E.





Plan A8

Suite (Adaptable)

Interior: 557-558 s.f.
 Exterior: 127 s.f.
 Total: 684-685 s.f.

The developer reserves the right to modify or make substitutes to the building design, specifications and floorplans should they be necessary. Renderings, views, and layouts are for illustration purposes only. Sales powered by MLA Canada Realty, E.&O.E.

